

# matrox Millennium G550 LP PCI

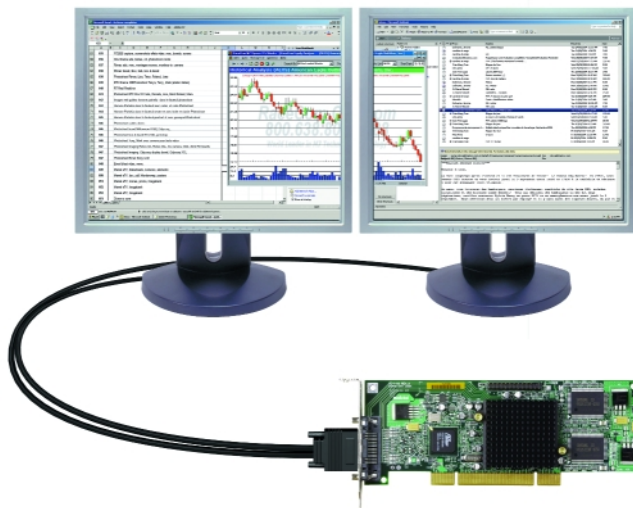
Low-profile PCI graphics card



## Complete Matrox multi-display functionality in an ultra compact board design

The Millennium G550 Low-profile PCI half-length 32 MB card is ideal for corporate desktop users who need Matrox's renowned stability, pristine image quality and unified driver support in addition to full-featured dual digital\* and analog output capabilities—all in a compact board design.

Additionally, its small size allows the G550 to fit into both Low-profile and ATX systems and enables easy, economical upgrades. Compact and flexible, the G550 Low-profile PCI card will meet all corporate multi-display 2D graphics needs.



With established multi-display leadership and more than 28 years of industry experience, Matrox designs and manufactures graphics cards that are based on proven technology, deliver superior stability and are backed by specialized product support teams worldwide.

Matrox graphics cards are consistently chosen by Fortune 500 companies and offer cutting-edge, award-winning technology. Matrox cards offer industry-leading multi-display capabilities, high meantime before failure (MTBF), long product life cycles, support for various operating systems including Microsoft® Windows and Linux®, and Matrox UltraSharp Display Output Technology, for flicker-free, ultra-crisp image quality.

## Key features:

- 256-bit GPU with 64-bit DDR memory bus
- 32 MB DDR memory
- Support for up to 66Mhz on PCI bus
- Half-length, half-height (low-profile)
- Fits into both Low-profile and ATX systems
- Integrated RAMDACs
- Integrated TMDS transmitters
- Unified driver support
- Supports dual RGB and dual DVI\* output
- OS support for Microsoft® Windows® XP, Windows® 2000, and Linux
- Supports up to 2048 x 1536 analog resolution

Feature	G550 Low-profile PCI
PCI	✓
Low-profile	✓
Board length	6.6-inches
Dual DVI*	Max. resolution 1280 x 1024 on each
Dual RGB	Max. resolution 1600 x1200 on each
Independent desktop mode	Independent resolution on each desktop
Stretched desktop mode (NT Style Fixed Resolution)	✓
Matrox Multi-Clone	✓
Connectors	LFH60 to dual HD15
Memory	32MB
List price (USD)	\$149

\* Available with Dual DVI-I upgrade cable

For more information, please contact Matrox sales at **1-800-361-1408**, or by email at [insales@matrox.com](mailto:insales@matrox.com)

**North America (Headquarters)**  
**Matrox Graphics Inc.**  
 Sales line: 1-800-361-1408  
 Sales email: [graphics.sales@matrox.com](mailto:graphics.sales@matrox.com)

**Asia Pacific**  
**Matrox Asia Ltd.**  
 Tel: (852) 2281-5714  
 Sales email: [insales@matrox.com](mailto:insales@matrox.com)

**France**  
**Matrox France SARL**  
 Tel: (01) 45 60 62 00  
 email: [Matrox.France@Matrox.Com](mailto:Matrox.France@Matrox.Com)

**Italy**  
**Ufficio Matrox per l'Italia - 3G Electronics SRL**  
 Tel: +39-02-5253095  
 email: [vendite@treg.it](mailto:vendite@treg.it)

**Germany**  
**Matrox Electronic Systems GmbH**  
 Tel: +49 (0) 89 - 62 17 00  
 Email - Germany, Austria, Switzerland:  
[Info-CentralEurope@matrox.com](mailto:Info-CentralEurope@matrox.com)(German)

Email - Denmark, Norway, Sweden, Finland:  
[Info-NorthernEurope@matrox.com](mailto:Info-NorthernEurope@matrox.com)  
 (German/English)

Email - all Eastern European countries:  
[Info-EasternEurope@matrox.com](mailto:Info-EasternEurope@matrox.com)  
 (German/English)

**United Kingdom**  
**Matrox UK**  
**Pre-sales hotline:**  
 +44 (0) 1753 66 55 44  
 email: [graphic.info.uk@matrox.com](mailto:graphic.info.uk@matrox.com)  
 (Serving United Kingdom, Benelux,  
 Middle East & South Africa)

**matrox**  
[www.matrox.com/mga](http://www.matrox.com/mga)