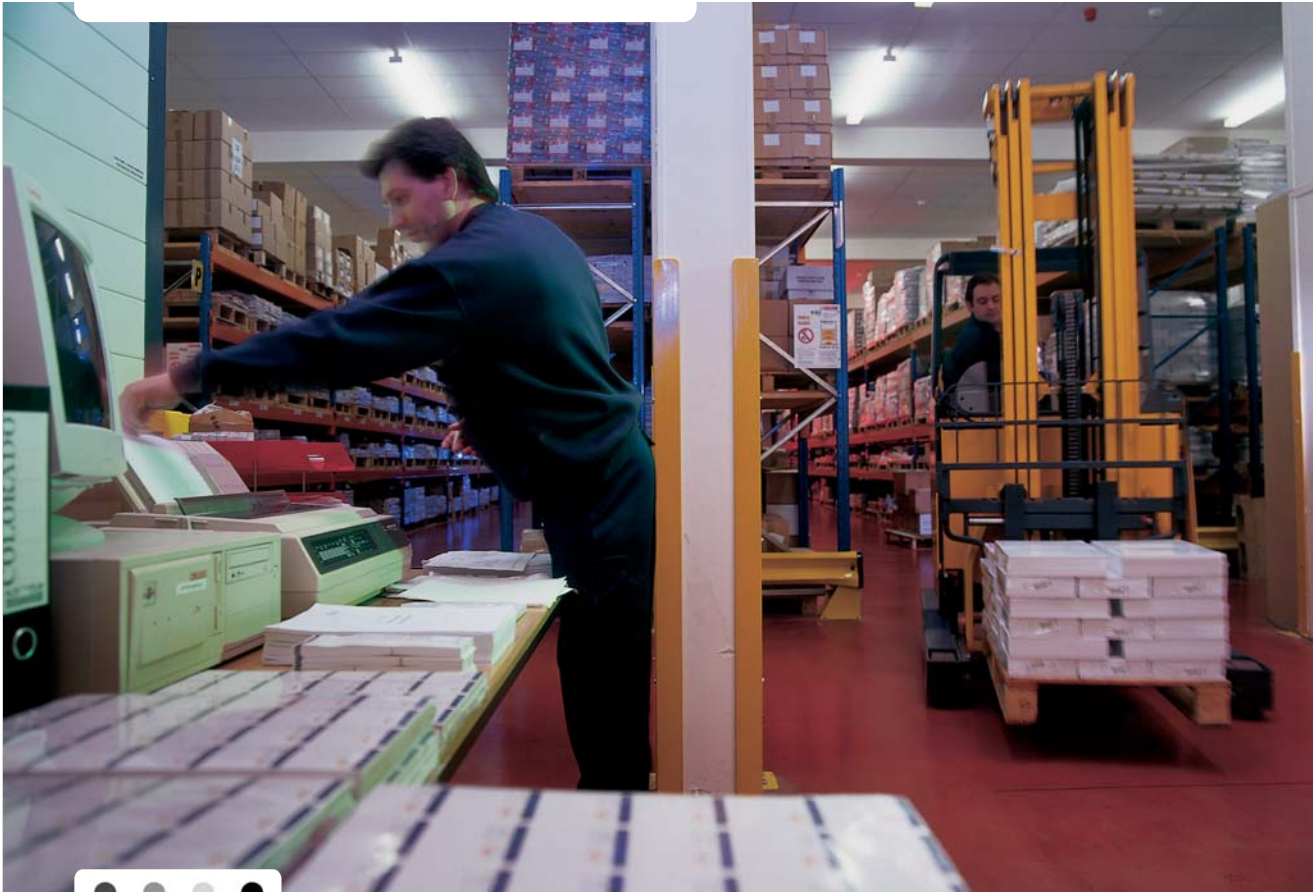


ML395 DOT MATRIX PRINTER



- ❖ ML395B
- ❖ ML395C
- ❖ 24-PIN DOT MATRIX PRINTERS

VERSATILE, RELIABLE, LOW RUNNING COSTS AND HIGH SPEED FROM OKI'S 24-PIN FLAGSHIP

The ML395B is the fastest and highest quality printer in Oki's 24-pin dot matrix range, especially recommended for high volume data processing. The ML395C is the colour version of this printer, excellent for reports and presentations, as well as high quality, high volume mailshot requirements.

MAIN FEATURES OF THE ML395B/ML395C PRINTER

- ❖ 136 column high volume dot matrix printer
- ❖ 24-pin durable print head
- ❖ Up to 607 characters per second print speed
- ❖ Multi-part paper-handling (original + 3 copies)
- ❖ Proven reliability even in hostile environments and heavy duty word and data processing tasks
- ❖ Ideal for Marketing/Sales departments - high speed, letter quality output with the added impact of colour (ML395C)
- ❖ Also suited to Accounts/Administration - superb paper-handling capabilities for a variety of media



OKI

ML395 DOT MATRIX PRINTER

PRODUCT SPECIFICATION

		ML395B	ML395C
General	Number of pins	24	
	No. of multi-part forms	4 (1 + 3 copies)	
Speed & throughput	Utility (12cpi & 10cpi)	486cps; 405cps	
	Letter quality (12cpi & 10cpi)	162cps; 135cps	
	Fastest print speed (15cpi)	607cps	
Font & print features	Carriage width (10cpi)	136 columns	
	Max. in compressed mode	272 columns	
	Character pitch	10/12/15/17.1/20 pitch & proportional	
	Graphics resolution	Up to 240 x 360 dpi	
	Typeface & Font	Courier, Roman, Swiss, Prestige, Gothic, Swiss Bold, NLQ, High Speed Draft, Utility + Barcodes	
	Typestyle	Emphasised, Enhanced, Double Width, Double Height, Italics, Bold, Underline, Subscript, Superscript, Overscore	
Emulations & interfaces	Printer emulations	Epson LQ, IBM ProPrinter X24E/X24E AGM	
	Standard interfaces	Centronics Parallel, Serial RS 232C, Dual Interface	
Paper-handling	Continuous paper	76–406mm	
	Continuous envelope	239 x 102mm	
	First printable line (from top of page)	Cut sheet: 25.4mm Continuous: 23.3mm	
	Standard	Paper parking, Zero tear-off, Semi-autoload single sheet, Rear push tractors	
	Optional	Single/dual bin sheet feeder, Bottom power tractors, Pull tractors	
Physical	Dimensions (HxWxD)	180 x 570 x 417mm	
	Weight	17kg	
	Memory	Standard buffer 23KB	
	Noise level	58dB(A)/56dB(A) (quiet mode)	
Power	Power requirements	230V AC	
	Frequency	50/60Hz	
Reliability	Print head life	200 million characters	
	Ribbon life (black)	5 million characters	
	Ribbon life (colour)	N/A	7 million characters (total)
Supplies life	MTBF	8,000 hours	

OKI

Only use genuine Oki Original consumables to ensure the best quality and performance from your hardware. Non Oki Original products may damage your printer's performance and invalidate your warranty. Specifications subject to change without notice. All trademarks acknowledged.

Okī, Network Solutions
for a Global Society

OKI EUROPE, PART OF OKI ELECTRIC

OKI EUROPE LTD,
CENTRAL HOUSE, BALFOUR ROAD,
HOUNSLOW, MIDDLESEX, TW3 1HY,
UNITED KINGDOM
TEL: +44 (0)20 8219 2190
FAX: +44 (0)20 8219 2199
WWW.OKIEUROPE.COM



As an ENERGY STAR Partner, Oki Europe Ltd has determined that this product meets the ENERGY STAR guidelines for energy efficiency

©2003 Oki Europe Ltd.