

# Scalable Enterprise WiFi System with Revolutionary Software Controller

The UniFi Enterprise WiFi System is a scalable enterprise access point solution designed to be easily deployed and managed. The Access Point has a sleek design and can be easily mounted to a ceiling tile or wall using the included mounting hardware. It is powered using the included Power over Ethernet adapter so that you can provide power and data using a single cable.

The UniFi Enterprise WiFi System includes the UniFi Controller software. The software installs on any PC within the network and is easily accessible through any standard web browser. Using the UniFi Controller software, an Enterprise WiFi network can be instantly configured and administered without any special training. Real-time status, automatic UniFi device detection, map loading, and advanced security options are all seamlessly integrated.



## Features

- Aesthetic industrial design with unique LED provisioning ring
- Sleek wall-mountable and ceiling tile mountable design (all accessories included)
- Includes Power over Ethernet capability for single cable wiring (supplies both power and data)
- Virtual UniFi Controller software interface (no expensive WiFi hardware controller/switch needed)
- Highly intuitive setup and configuration with many powerful features (no special training needed)
- Scalable to hundreds of devices while maintaining a single unified management system

# Specifications

Dimensions	20 x 20 x 3.65 cm
Weight	290 g (430 g with mounting kits)
Ports	Ethernet (Auto MDX, auto-sensing 10/100 Mbps)
Buttons	Reset
Antennas	2 Integrated (supports 2x2 MIMO with spatial diversity)
Wi-Fi Standards	802.11 b/g/n*
Power Method	Passive Power over Ethernet (12-24V)
Power Supply	24V 1A PoE Adapter included
Maximum Power Consumption	4W
Max TX Power	23 dBm
BSSID	Up to four per radio
Power Save	Supported
Wireless Security	WEP, WPA-PSK, WPA-TKIP, WPA2 AES, 802.11i
Certifications	CE, FCC, IC
Mounting	Wall/Ceiling (Kits included)
Operating Temperature	-10°C to 70°C (14°F to +158° F)
Operating Humidity	5% - 80% Condensing

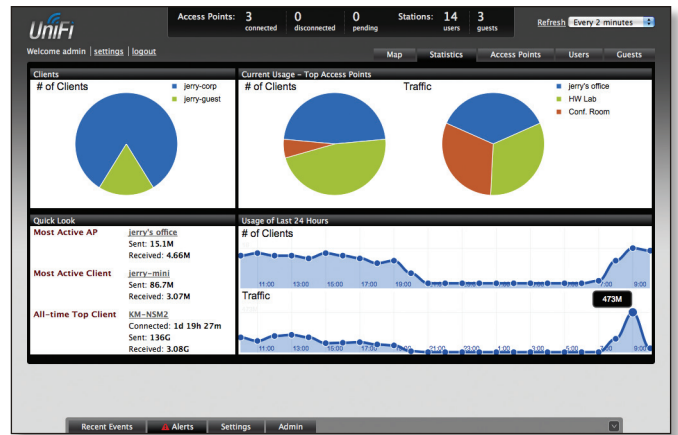
## Advanced Traffic Management

VLAN	802.1Q
Advanced QoS	WLAN prioritization
Guest Traffic Isolation	Supported
WMM	Voice, video, best effort, and background
Concurrent Clients	100+

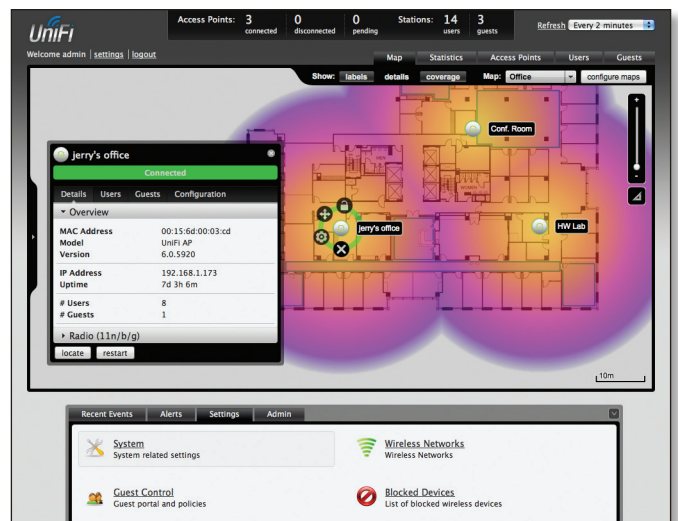
## Supported Data Rates (Mbps)

802.11n	MCS0 - MCS15 (6.5 Mbps to 300 Mbps), HT 20/40
802.11b	1, 2, 5.5, 11
802.11g	6, 9, 12, 18, 24, 36, 48, 54

\* 2.4GHz



Network performance analytics provide the administrator with overall network usage and distribution of traffic inside the UniFi WiFi Enterprise deployment.



Add a map of your deployment and view real-time status information and coverage areas.