

Ergotron®

LX Wall Mount System



Highlights



- Articulating arms feature full tilt/pan capability and 13" (33 cm) height adjustment, providing premium ergonomic adjustment
- Extends LCD up to 25" (64 cm); keyboard extends up to 35" (89 cm); push your display and keyboard out of the way when not in use
- Ergonomic back-tilt keyboard tray ensures wrists remain in a neutral position during data entry—avoid repetitive-stress injuries while increasing comfort and productivity
- Creates a complete and compact workstation
- Effortlessly and independently position the LCD and keyboard to the most comfortable viewing and typing position, all while maintaining eye contact with your patient
- Save space—fold up the workstation tight against the wall when not in use
- Integrated cable management and cable channels organize and route cables out of the way
- Easily adjust height of components on Wall Track by loosening set-screws
- Open design for future hardware upgrades



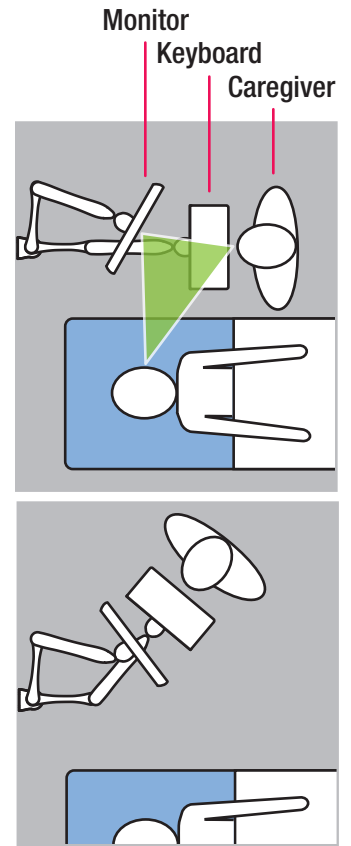
Complete, compact wall-mount workstation

Durable polished aluminum construction!

Effortlessly and independently position the LCD and keyboard to the most comfortable viewing and typing position, all while maintaining eye contact with your patient. When not in use, simply push the system and fold it up tight against the wall.



- Convenient bifocal viewing: screen lowers and positions for optimized viewing by users with bifocal glasses
- Ideal for space-constrained rooms—keyboard folds to within 3.5" (9 cm) of wall in storage position. LCD arm folds back to a depth of 5.3" (13 cm)
- Mounting options: attaches directly to sturdy vertical surfaces. Where applicable, install to wood stud. Also attaches to Wall Track using bracket 97-091 (order separately)
- Fasteners for direct attachment to wood/metal studs or concrete surface are not included—customer supplied
- Monitor depth may affect weight capacity
- Mounting Standards: VESA FDMI MIS-D, 100/75, C (hole pattern: 100 x 100 mm & 75 x 75 mm)
- Universal CPU Holder size range: 2–8" (5–20 cm) wide; includes plastic spacer to accommodate most small form factor and ultra small form factor CPUs
Vertical Small CPU Holder size range: 1 1/8" to 3 3/4" (3,5–9,5 cm) wide; accommodates most small form factor and ultra small form factor CPUs
- CPU Holder includes theft deterrent anchor holes for cable locks and fasteners for locking the holder's width



Product Name	LX Wall Mount System
Part Number	Universal CPU Holder 45-247-026 (silver) Vertical Small CPU Holder 45-253-026 (black)
Product Includes	10" and 34" Wall Tracks with (2) black track covers, LX Wall Mount LCD Arm, LX Keyboard Arm, wrist rest, mouse holder, CPU Holder, two (2) 10" Cable Channels, mounting kits for hollow-wall and wall-stud installation
Shipping Dimensions	37"H x 22"W x 7.5"D (94 x 56 x 19 cm)
Shipping Weight	40 lbs (18 kg)
Warranty	5 years
Compatible Display(s)	Almost any VESA compliant monitor up to 24" VESA FDMI, MIS-D, 75/100, C (hole patterns = 100 x 100 mm and 75 x 75 mm)



LCD Size	Weight Capacity*	Lift**	Tilt	Pan	Rotation	VESA
≤ 24"	≤ 20 lbs ≤ 9,1 kg	13" 33 cm	LCD 85° Keyboard 80°	360°	90° P/L	MIS-D

*Weight Capacity: display 7–20 lbs (3,2–9,1 kg); keyboard 5 lbs (2,2 kg); CPU 40 lbs (18 kg).

Monitor depth may affect weight capacity

**Lift: display 13" (33 cm); keyboard 13" (33 cm)

© 2010 Ergotron, Inc. rev. 06/29/2010 e-05-097-EA Content is subject to change without notification

Americas Sales and Corporate Headquarters

St. Paul, MN USA
(800) 888-8458
+1-651-681-7600
www.ergotron.com
sales@ergotron.com

EMEA Sales

Amersfoort, The Netherlands
+31 33 45 45 600
www.ergotron.com
info.eu@ergotron.com

APAC Sales

Tokyo, Japan
www.ergotron.com
apaccustomerservice@ergotron.com

Worldwide OEM Sales

www.ergotron.com
info.oem@ergotron.com

