

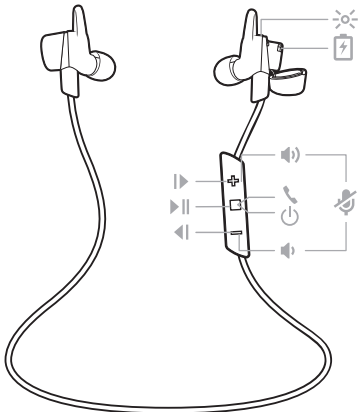
BackBeat GO 3

User Guide

Contents

| | |
|---------------------------------|----|
| Headset overview | 3 |
| Be safe | 3 |
| Pair and fit | 4 |
| Get paired | 4 |
| Get the best sound | 4 |
| Install the app | 6 |
| Use BackBeat GO 3 Companion app | 6 |
| Charge | 7 |
| Charge | 7 |
| Check battery status | 7 |
| DeepSleep Mode | 7 |
| The Basics | 8 |
| Power on or off | 8 |
| Play or pause audio | 8 |
| Skip to next track | 8 |
| Play previous track | 8 |
| Adjust the volume | 8 |
| Answer or end a call | 8 |
| Mute | 8 |
| Use call waiting | 8 |
| Pair multiple devices | 8 |
| Restore factory settings | 8 |
| Support | 10 |

Headset overview



| | |
|--|---|
| | Charge port |
| | Headset indicator light (LED) |
| | Volume up button: Skip to next track |
| | Center button: Play/pause music |
| | Volume down button: Play previous track |
| | Volume up button: Increase volume |
| | Center button: Answer/end/decline call |
| | Center button: Power on/off |
| | Volume down button: Decrease volume |
| | Volume up and down button: Mute/unmute |

Be safe

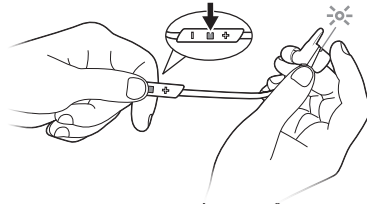
Please read the safety guide for important safety, charging, battery and regulatory information before using your new headset.

Pair and fit

Get paired

The first time you power on your earbuds, the pairing process begins.

- 1 Power on the earbuds by pressing on the center button until you hear a pairing voice prompt and the LED on the right earbud flashes red and blue.



- 2 Activate **Bluetooth**® on your phone and set it to search for new devices.

- **iPhone Settings > Bluetooth > On***
- **Android Settings > Bluetooth > On > Scan for devices***

NOTE *Menus may vary by device.

- 3 Select "PLT BB GO 3 (BackBeat)."

If necessary, enter four zeros (0000) for the passcode or accept the connection.

Once successfully paired, you hear "pairing successful" and the LEDs stop flashing.

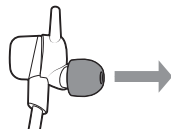
NOTE To enter pair mode after the first pairing process, start with the earbuds powered off and press and hold the center button until you hear "pair mode."

Get the best sound

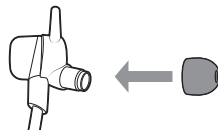
For the best sound, a good seal with your ear canal is essential. Try on the three different sized eartips to find which one fits you best. You may end up with a different size eartip in each ear for the best fit.



- 1 **Remove the eartip** To remove the eartip, pull straight out with some force.



- 2 **Replace the eartip** Push the eartip onto the earbud tip until it clicks in place.



- 3 **Try it out** Put the earbuds in your ears and make sure the stabilizing loop is tucked securely in your ear for stability.



Listen to your favorite song while trying out each eartip and select the one that gives you the best fit and sound.

Install the app

Get the most from your earbuds by installing our free app, BackBeat GO 3 Companion for iOS/Android. Download it at www.plantronics.com/us/product/plantronics-hub-desktop/#support, the iTunes store or Google Play.

With this app, you can:

- Manage the earbud's connection to other devices
- Change the earbud language
- Explore features
- View the user guide

The app will also guide you through the first pairing process if the earbuds are not paired to the device.

For maximum benefit, install the BackBeat GO 3 Companion app on every device paired to the earbuds.

Use BackBeat GO 3
Companion app

Connection switcher

The connection switcher screen gives you an instant view of the devices paired to your earbuds. Use the connection switcher to easily switch between paired devices with a single tap.

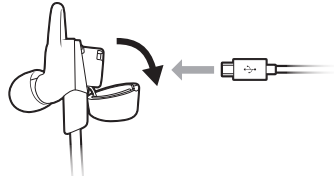
Earbud settings

Go to settings to update the earbud firmware, select a different earbud language, enable/disable HD Voice, and manage your paired device list.

Charge

Charge

Your new earbuds have enough power to pair and listen to music for a while. To access the charging port, insert your fingernail into the groove on top of the right earbud and pull down.



It takes up to 2.5 hours to fully charge the earbuds. While charging, the LED blinks red and turns blue once charging is complete.

Check battery status

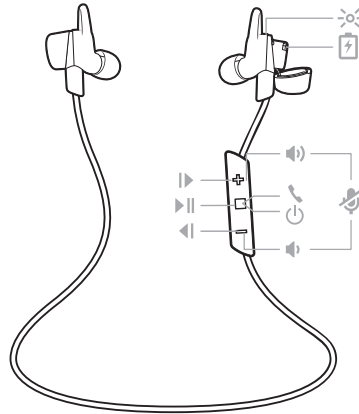
Check the battery status by tapping either of the Volume buttons when your earbuds are not playing music or on a call. Your earbuds announce battery status by the hour and the LED flashes blue. When there is less than 1 hour remaining battery time, your earbuds announce the "battery low" status and the LED flashes red.

DeepSleep Mode

If you leave your earbuds powered on but out of range of your paired phone for more than 10 minutes, they will conserve battery power by entering into a DeepSleep mode.

Once back in range with your phone, press the center button to exit DeepSleep mode. If your phone is also ringing, tap the center button again to answer your call.

The Basics



| | |
|--------------------------|---|
| Power on or off | Press the center button until you hear "power on." To power off, press the center button for 4 seconds until you hear "power off." |
| Play or pause audio | Tap the center button. |
| Skip to next track | Press the Volume up (+) button for more than 1 second. |
| Play previous track | Press the Volume down (-) button for more than 1 second to restart the current track. Press the button twice (each press more than 1 second) to go to the previous track. |
| Adjust the volume | Tap the Volume up (+) or down (-) button. |
| Answer or end a call | Tap the center button. |
| Mute | During a conversation, simultaneously tap the Volume up (+) and down (-) buttons. You will hear "mute on" or "mute off." An alert repeats every 5 minutes when mute is on. |
| Use call waiting | First, tap the center button to put the first call on hold and answer the second call. To switch between calls, press the center button for 2 seconds. To end the second call and retrieve the first call, tap the center button. |
| Pair multiple devices | Your earbuds can pair with up to eight devices but only maintain one connection. <ol style="list-style-type: none">1 To enter pair mode after the first pairing process, start with the earbuds powered off. Press and hold the center button until you hear "pair mode" and the LED on the right earbud flashes red and blue.2 Download and use the BackBeat GO 3 Companion app to manage your connection and switch devices. |
| Restore factory settings | When you restore the earbuds to its factory settings, the paired devices list is deleted. <ol style="list-style-type: none">1 First, put the earbuds in pairing mode. Choose from the following:<ul style="list-style-type: none">• With the earbuds powered off, press and hold the Audio/call button until you hear "pair mode" or• With the earbuds powered on and not during a call, press and hold the Volume up (+) and Volume down (-) buttons until you hear "pair mode"The indicator light, on the right earbud, flashes red and blue to indicate pairing mode.2 Second, while the earbuds are in pairing mode, press and hold the Volume up (+) and Volume down (-) buttons until the LED flashes purple. |

After the reset, the earbuds power off.

Support

| | | |
|---|--|---|
| EN 0800 410014 | FI 0800 117095 | NO 80011336 |
| AR +44 (0)1793 842443* | FR 0800 945770 | PL +44 (0)1793 842443* |
| CS +44 (0)1793 842443* | GA 1800 551 896 | PT 800 84 45 17 |
| DA 80 88 46 10 | HE +44 (0)1793 842443* | RO +44 (0)1793 842443* |
| DE Deutschland 0800 9323 400 Österreich 0800 242 500 Schweiz 0800 932 340 | HU +44 (0)1793 842443* | RU 8-800-100-64-14 +44 (0)1793 842443* |
| EL +44 (0)1793 842443* | IT 800 950934 | SV 0200 21 46 81 |
| ES 900 803 666 | NL NL 0800 7526876 BE 0800 39202 LUX 800 24870 | TR +44 (0)1793 842443* |

**Support in English*

For warranty details, go to plantronics.com/warranty.

NEED MORE HELP?

plantronics.com/support

plantronics®
Simply Smarter Communications™

Plantronics, Inc.

345 Encinal Street
Santa Cruz, CA 95060
United States

Plantronics BV

South Point Building C
Scorpius 140
2132 LR Hoofddorp, Netherlands

© 2016 Plantronics, Inc. BackBeat, DeepSleep, Plantronics, and Simply Smarter Communications are trademarks of Plantronics, Inc. registered in the US and other countries, and PLT is a trademark of Plantronics, Inc. iPhone and iTunes are trademarks of Apple Inc., registered in the U.S. and other countries. Bluetooth is a registered trademark owned by Bluetooth SIG, Inc. and any use by Plantronics, Inc. is under license. All other trademarks are the property of their respective owners.

Patents: US 8,504,115; D691,113; CN ZL201330012481.4; EM 002166199; IN 251007; 251008; TW D159649; D161452; patents pending.
207234-06 (03.16)