

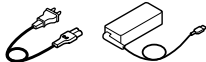
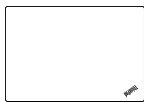
ThinkPad® A285

Setup Guide

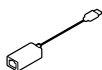
Lenovo™

Unpack

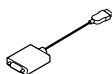
Standard items



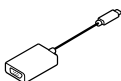
Optional accessories



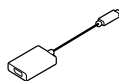
ThinkPad Ethernet Extension Adapter
Gen 2 *



Lenovo HDMI to VGA Adapter *



Lenovo USB-C to VGA Adapter *



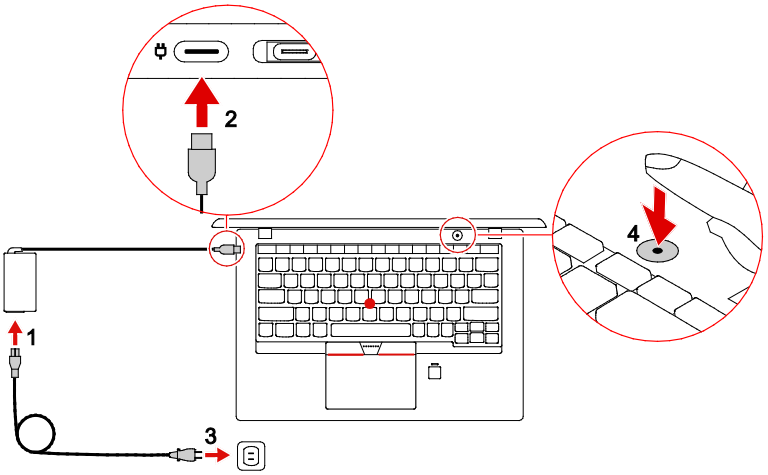
Lenovo USB-C to DisplayPort
Adapter *

* Available on some models

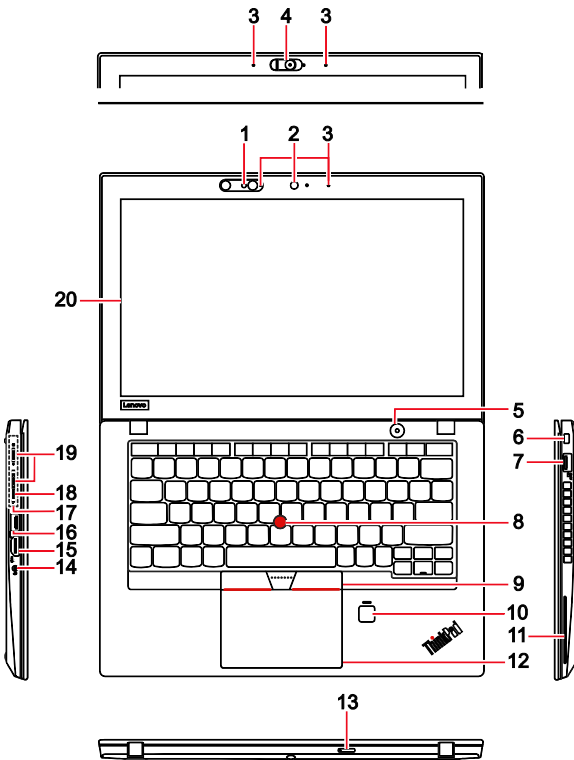
E-manual



Initial setup



Overview



[English]

1. Infrared camera *
2. Conventional camera (available on models with the infrared camera) *
3. Microphones
4. Conventional camera with ThinkShutter *
5. Power button
6. Mini security-lock slot
7. Always On USB 3.1 connector Gen 1
8. TrackPoint® pointing stick
9. TrackPoint buttons
10. Fingerprint reader *
11. Smart-card slot *
12. Trackpad
13. Nano-SIM-card and microSD-card slot
14. Audio connector
15. HDMI™ connector
16. USB 3.1 connector Gen 2
17. Docking-station connector
18. Ethernet extension connector Gen 2
19. USB-C™ connectors / power connectors
20. Multi-touch screen *

* Available on some models

European Union conformity

EU contact: Lenovo, Einsteinova 21, 851 01 Bratislava, Slovakia



Compliance to Directives for Information Technology Equipment (ITE) and Radio Equipment

EMC Directive Statement: This product is in conformity with the protection requirements of EU Council Directive 2014/30/EU on the approximation of the laws of the Member States relating to electromagnetic compatibility. The full compliance statement is located in the *User Guide*.

Models with a radio device:

Compliance with the Radio Equipment Directive

Hereby, Lenovo (Singapore) Pte. Ltd., declares that the radio equipment type ThinkPad A285 is in compliance with Directive 2014/53/EU.

The full text of the system EU declaration of conformity and the EU wireless module declarations are available at the following Internet addresses:

- For notebook computers:
<https://www.lenovo.com/eu-doc-notebooks>
- For tablets:
<https://www.lenovo.com/eu-doc-tablets>

This radio equipment operates with the following frequency bands and maximum radio-frequency power:

Technology	Frequency band [MHz]	Maximum transmit power
WLAN 802.11b/g/n	2400 - 2483.5	< 20 dBm
WLAN 802.11a/n/ac	5150 - 5725	< 23 dBm
Bluetooth BR/EDR/LE	2400 - 2483.5	< 10 dBm
WWAN UMTS	1/8	< 24.5 dBm
WWAN LTE	1/3/7/8/20/28	< 24 dBm

Note: The list of wireless modules used in this product is available in the *Regulatory Notice*. You can download the latest *Regulatory Notice* for this product from the Lenovo Support Web site: <https://support.lenovo.com>

First Edition (June 2018)
© Copyright Lenovo 2018.

LIMITED AND RESTRICTED RIGHTS NOTICE: If data or software is delivered pursuant to a General Services Administration "GSA" contract, use, reproduction, or disclosure is subject to restrictions set forth in Contract No. GS-35F-05925.

Reduce | Reuse | Recycle

