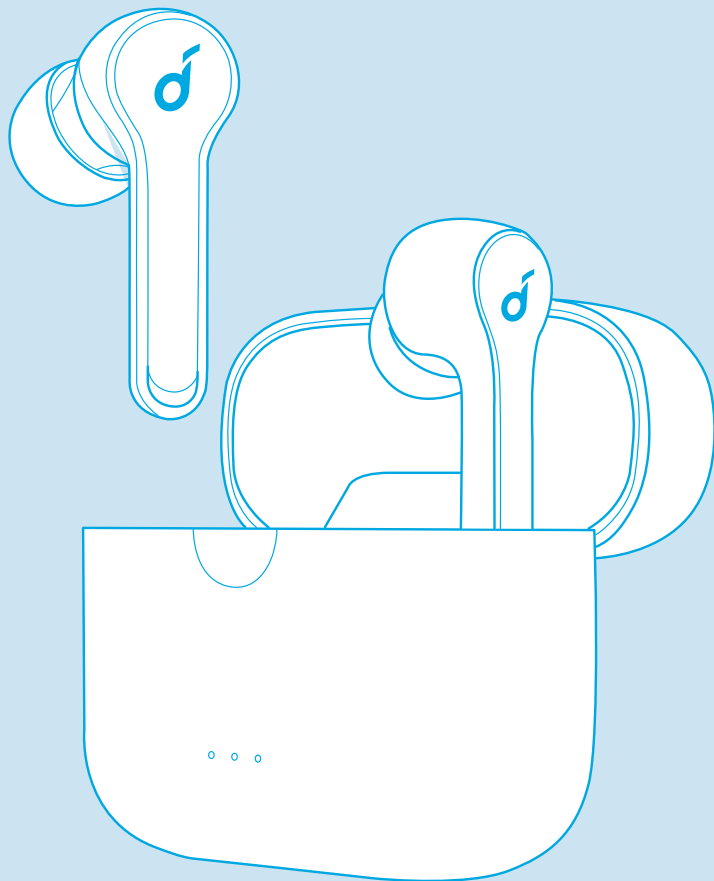


soundcore



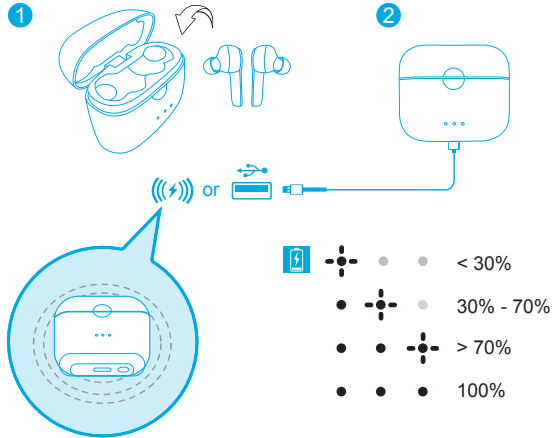
Soundcore Liberty Air 2

USER MANUAL

Charging



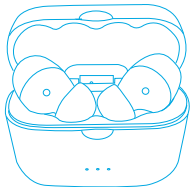
- Open or close the charging case to activate the LED battery indicator.
- Fully charge both the earbuds and the charging case before the first-time using.
- To prevent damage, use the provided USB-C cable.
- You can charge the charging case by using a certified wireless charger (not provided).
- Fully dry off the earbuds and the USB port before charging.



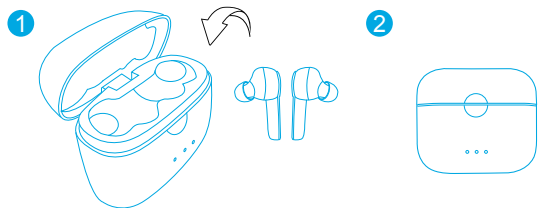
Powering On/Off

Open the charging case, the earbuds will automatically power on. Place the earbuds back into the charging case and close the case, the earbuds will automatically power off.

ON



OFF



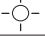

- To manually power on, tap and hold the touchpad on either one of earbuds for 2 seconds until the LED indicator flashes white once.
- To manually power off, tap and hold touchpad on either one of earbuds for 8 seconds until the LED indicator flashes red once.

Pairing

True Wireless Stereo Connection

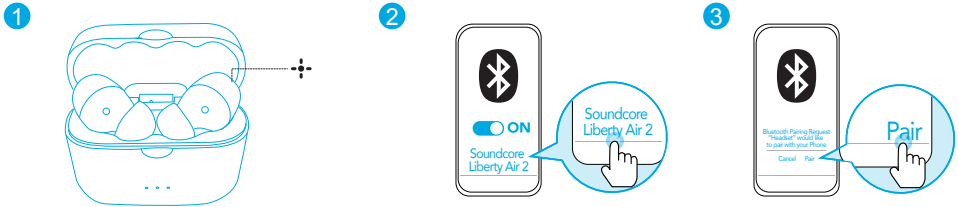
Open the charging case, the earbuds will automatically power on. The right earbud will automatically connect with the left earbud.

LED behaviour (Earbuds)

	Breathing white	TWS connecting
	Steady white for 1 second	TWS connected

Bluetooth Pairing with your Device

The earbuds will enter pairing mode when TWS connected or when powered on in mono mode. You are requested to confirm the connection when you see a pop-out screen.



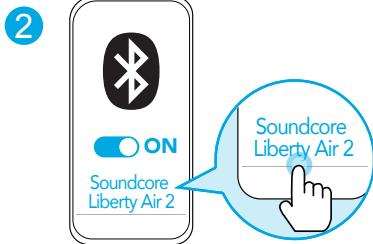
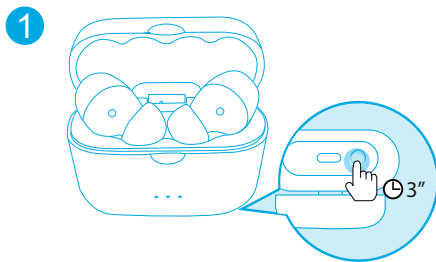
LED behaviour (Earbuds)

	Rapidly flashing white	Bluetooth pairing
	Slowly flashing white	Bluetooth connected



- In the pairing process, some devices are incompatible with Qualcomm True Wireless Primary-Secondary dual pairing names, it may notice **"connection unsuccessful"** when you tap **"Pair"** or even no screen popped out. Don't worry and keep using.
- Once successfully paired, the primary earbud connects with your device and transfers signal to the secondary earbud, the latter one will not connect with your device. As a result, in the Bluetooth pairing list on your device, it may indicate that only one side is connected while the other side is not.

To pair with another Bluetooth device, place the earbuds back into the charging case and make sure they are being charged, keep the cover open, then press and hold the button on the bottom of the charging case for 3 seconds until the LED indicators on earbuds flash white rapidly.





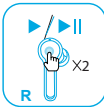

- Each time you power on your Soundcore earphones, it will automatically connect to your last successfully connected device if available within the Bluetooth range.
- **Mono mode:** When Bluetooth connected, you can use either one of the earbuds only by putting the other one back into the charging case and closing the cover.

Wearing

1. Choose the ear tips that fit your ears the best.
2. Insert the earbuds into the inner canal of your ears.
3. Turn and find the most comfortable position.

Controls

 All of the controls in stereo mode can be customized in the Soundcore App.

	
Play / Pause	 Tap twice (R)
Auto pause	Automatically pause when removing either one or both earbuds off your ear. Tap twice to resume.
Next track	 Tap twice (L)
Volume up / down	<ul style="list-style-type: none"> • The volume up / down controls can be customized in Soundcore App • Control volume via the connected device



Answer / End a call



Tap twice (L/R)

Reject a call



Tap and hold for 2 seconds (L/R)

Auto Answer a call

Take earbuds out of the charging case



Activate Siri or other voice assistant software

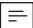


Tap and hold for 2 seconds (L/R)

Mono mode (controls in mono mode cannot be customized in the App)

Play / Pause	Tap twice
Answer / End a call	
Reject a call	Tap and hold for 2 seconds
Activate Siri or other voice control software	

Soundcore App

 Make sure the earbuds firmware is always the most updated before using.

Download the Soundcore App for HearID, UI customization, EQ settings and earbuds firmware update.

- **HearID:** HearID maps your personal hearing sensitivity at multiple frequencies and analyzes the results. It tailors the EQ settings and creates a personalized sound profile for you.
- **UI customization:** In stereo mode, all of the controls can be customized in the App. In mono mode, the controls are fixed.
- **EQ settings:** There're more than 20 EQ settings you can choose in the App to optimize your experience while enjoying different music genres.
- **Earbuds firmware update:** The earbuds firmware can be updated in the App. You will be informed once the new version of firmware is detected when you connect the earbuds with the App.



Download the Soundcore App for HearID, UI customization and EQ settings.



Soundcore



Google Play and the Google Play logo are trademarks of Google Inc.

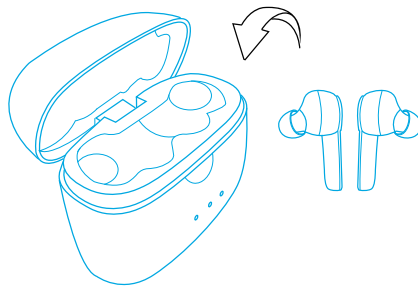


Apple and the Apple logo are trademarks of Apple Inc.

Reset

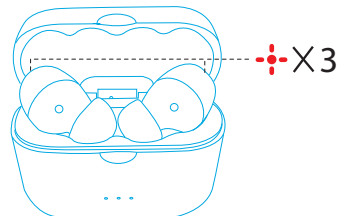
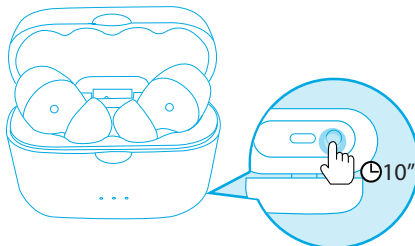
Reset the earbuds if the earbuds cannot connect with each other properly or cannot connect with your device properly.

1. Place the earbuds into the charging case and make sure they are being charged.



2. Keep the charging case open, then press and hold the button on the bottom of the charging case for 10 seconds until the LED indicators on both earbuds flash red 3 times.

→ All the memory data will be cleared.



Specifications

☰ Specifications are subject to change without notice.

Input	5 V --- 500 mA
Rated output power	5 mW @ 1% THD
Battery capacity	55 mA x 2 (earbuds); 500 mA (charging case)
Charging time	1.5 hours (for earbuds); 2 hours (for charging case via USB); 3.5 hours (for charging case via wireless charger)
Playtime (varies by volume level and content)	7 hours (Totally 28 hours with the charging case)
Driver size	6 mm diamond coated driver x 2
Frequency response	20 Hz - 20 kHz
Impedance	16 Ω
Bluetooth version	V 5.0
Bluetooth frequency	2402-2480 MHz
Bluetooth profile	AVRCP1.6, A2DP1.3, HFP1.7
Audio codec format	SBC, AAC, aptX
Bluetooth range	10 m / 33 ft

Qualcomm®aptX™ Technical specifications

Compression ratio: 4:1

Word Depth: Support 16 bit and 24bit

Decoding delay: Sample Rate 48kHz<2ms

Dynamic range: 16bit>92dB, 24bit>120dB

Data rates: 352kbps

Decode mode: Stereo

Qualcomm aptX is a product of Qualcomm Technologies, Inc. and/or its subsidiaries. Qualcomm is a trademark of Qualcomm Incorporated, registered in the United States and other countries. aptX is a trademark of Qualcomm Technologies International Ltd., registered in the United States and other countries.